



## Colichrom-NPS

Version: 11/2022  
M&S Item numbers: 1035 (50 / PK) und 1035-H (100 / PK)  
Profile: Dehydrated nutrient pad sets 50 mm in petri dishes, sterile  
Color: White  
Storage: Dark and dry at room temperature  
Shelf life: 2 years after sterilization

### Description and application range

Colichrom-NPS are used for the detection of *Escherichia coli* and other coliforms from water with low accompanying flora (according to DIN EN ISO 9308-1:2017) and from beverages. With Colichrom-NPS coliforms can be cultivated and differentiated selectively by color. Gram-positive bacteria are largely inhibited by Tergitol-7 and the chromogenic components easily allow detection of *E. coli* (blue colonies) and coliforms (pink to purple colonies) among accompanying non-coliforms growing as beige colonies. The medium is manufactured and quality tested in compliance with ISO 11133:2014 + Amd. 2:2020 standard.

### Typical composition

Enzymatic digest of casein	1.0 g/l
Yeast extract	2.0 g/l
Sodium chloride	5.0 g/l
Sodiumdihydrogenphosphate	2.2 g/l
Di-Sodiumhydrogenphosphate	2.7 g/l
Sodium pyruvate	1.0 g/l
Tryptophan	1.0 g/l
Sorbitol	1.0 g/l
Tergitol-7	0.15 g/l
Chromogenic mix	0.4 g/l

Final pH: 6.8 ± 0.2 at 25 °C

### Microbiological quality control

#### Bacterial contamination

Incubation: aerobically at room temperature for 3 days, specification: no growth

#### Productivity quantitative analysis

Incubation: aerobically at 36 ± 2 °C for 21 + 3 h, approx. inoculum: 50 – 120 CFU

Microorganism	Test strain	Specification	Appearance
<i>Escherichia coli</i>	WDCM 00012	$P_R \geq 0.7$	Blue-violet colonies
<i>Klebsiella aerogenes</i>	WDCM 00175	$P_R \geq 0.7$	Pink to purple colonies

$P_R$  productivity rate (recovery rate)



**Selectivity** qualitative analysis

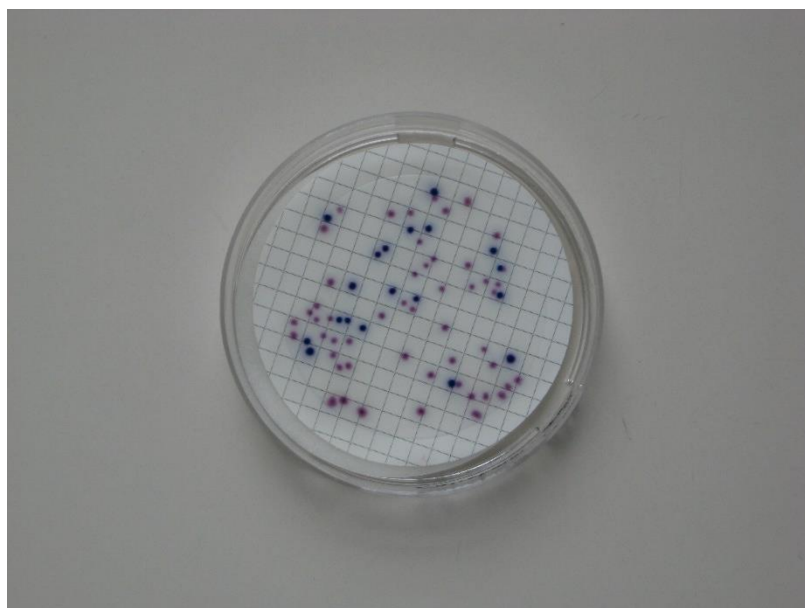
Incubation: aerobically at  $36 \pm 2$  °C for 21 + 3 h, approx. inoculum: 10,000 – 1,000,000 CFU

Microorganism	Test strain	Specification	Appearance
<i>Enterococcus faecalis</i>	WDCM 00009	Full inhibition	Fully inhibited

**Specificity** qualitative analysis

Incubation: aerobically at  $36 \pm 2$  °C for 21 + 3 h, approx. inoculum: 50 – 120 CFU

Microorganism	Test strain	Specification	Appearance
<i>Pseudomonas aeruginosa</i>	WDCM 00024	Growth	Beige



Mixed culture with *Escherichia coli* (blue colonies) and *Klebsiella aerogenes* (purple colonies) after 21 hours at 37 °C